



LEYTON *LH* HOUSE  
PROFESSIONAL

---

SUBLIME ELEGANCE

## SUBLIME ELEGANCE COLLECTION

INSPIRED BY SEASONAL TRENDS  
and COUTURE ELEGANCE



Existing: Natural Depth 8 Regrowth  
Target: Oyster Blonde

1. Lighten regrowth with high lift Alpine Blonde:- 12.1 + 12.2 + 9% LH Developer (1:2). Process up to 55 mins without heat
2. Rinse and shampoo with Couture Care Hydrolock Shampoo and dry hair
3. Root Stretch:- mix and apply 10.52 + .000 Demi Permanent + 5% Rouge Magenta + Demi Permanent Activating Crème (1:2)
4. Mids to Ends:- mix and apply target tone with Toner Rosé + 10.2 + 3% LH Developer (1:1.5). Visually process up to 10 mins
5. Rinse and condition with Couture Care Hydrolock Conditioner and spritz Couture Care All Purpose 6 in 1 Treatment
6. Dry and style



# SUBLIME ELEGANCE COLLECTION

## LUXURY HAIR COLOUR WITH DIVERSE CREATIVITY

Existing: Natural Depth 5  
Target: Petroleum

1. Pre-lighten hair using hand painting techniques, with Alpine Blonding Crème + 7.5% Alpine Developer (1:1.5). Process without heat up to 50mins or until a 9 or 10 depth is achieved
2. Apply root stretch colour at same time to process with lightening.  
Darkest Area:- root zone mix and apply 1.0 + 1.117 + 3% LH Developer (1:1.5)
3. Mid lengths and ends:- mix and apply 6.0 + 6.117 + 3% LH Developer (1:1.5). Process for 30 mins without heat
4. Rinse and shampoo with Couture Care Hydrolock and towel dry
5. Tone lightened hair to remove unwanted warmth, with Lilac + Champagne + 3% LH Developer (1:1.5). Process visually or up to 10 mins
6. Rinse and towel dry
7. Apply target tone to pre-lightened areas:- 10.21 + Demi Permanent Activating Crème (1:2)
8. Apply to lightened sections:- Colour Spangles Pineapple Pop and/or Sour Grape. Visually process to desired tone.
9. Rinse with cool water, spritz with Couture Care All Purpose 6 in1. Blowdry and style

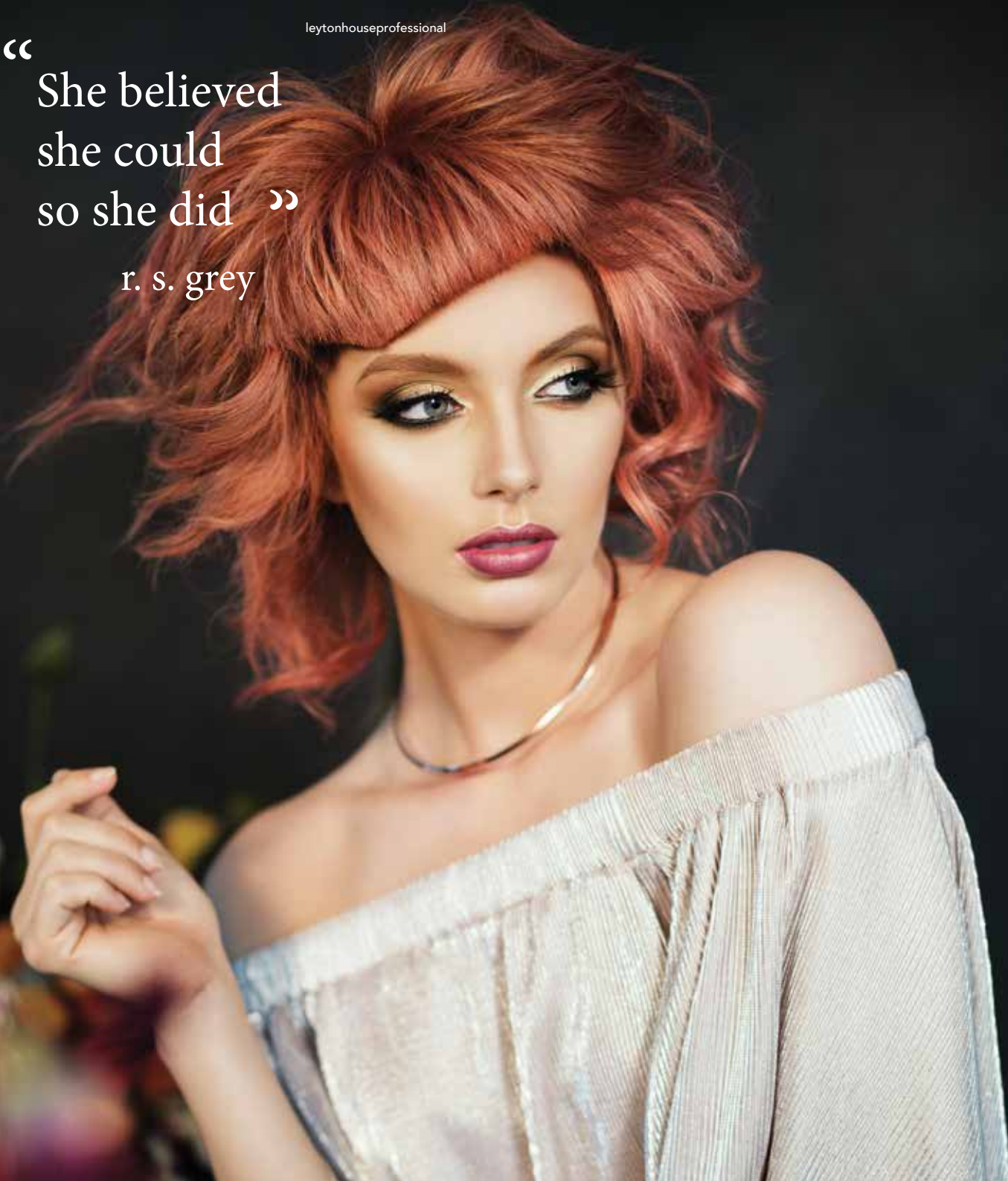




“

She believed  
she could  
so she did ”

r. s. grey



Existing: Natural Depth 8 Regrowth  
Target: Autumn Rose

1. Pre-lighten hair with Alpine Blonding Creme + 4.5% Alpine Developer (1:2) using balayage/hand painting techniques for multi tonal effect to mids and ends
2. Process up to 50 mins without heat or until a level 9 or 10 is achieved
3. Rinse and shampoo with Couture Care Hydrolock
4. Apply 8.43 + 8.52 + 3% (1:1.5) to root and 6% non lightened areas
5. All remaining lightened hair apply 12.0s + 8.52 + 8.43 + 3% (1:1.5)
6. Process without heat up to 30 mins
7. Rinse, shampoo and condition with Couture Care Hydrolock and blow dry and style



Existing: Natural Depth 8  
Target: Pink Diamond

1. Global lighten with Alpine Blonding Crème + 4.5% Alpine Developer (1:1.5).
2. Process without heat for up to 50 mins or to a 10 level
3. Rinse and shampoo with Couture Care Hydrolock
4. Tone unwanted warmth with Demi Permanent .000 + .2 Illuminates + Demi Permanent Activating Crème (1:2)
4. Global colour; mix and apply Colour Spangles Pink + Vintage Pastel (1:10) Process up to 20 mins
5. Rinse with cool water, towel dry and blowdry

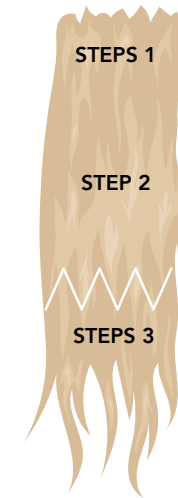


“ Nothing is impossible.  
The word itself says  
'I'm Possible' ”

audrey hepburn



“Simplicity is  
the keynote of  
all true Elegance”  
coco chanel



Existing: Natural Depth 5  
Target: Midnight Flame

1. Root stretch, blend 5.0 + 4.007 + 3% LH Developer (1:1.5). Process 30 mins no heat
2. Mids, 4.65 + 3% LH Developer (1:1.5). Blending into 5.66 + 3% LH Developer (1:1.5)
3. Ends, alternate Rouge Red, Red Violet, Red Copper and Magenta. + 6% LH Developer (1:1). Process 30 mins
4. Rinse, shampoo and condition with Couture Care Hydrolock



Existing: Natural Depth 5  
Target: Byzantium Splice

1. Pre-lighten triangular sections on each side of the head with apply Alpine Blonding Crème + 7.5% Alpine Developer (1:2)
2. Process for up to 50 mins or to a level 9-10
3. Tone unwanted warmth with Toner Lilac + Frost + 3% LH Developer (1:1.5) up to 5 mins
4. Global Colour:- 3.0 + 4.221 + 3% LH Developer (1:1.5) 30 mins no heat
5. Alternate pre-lightened sections with Colour Spangles Sour Grape, Cherry Berry; 4.221 + 3% (1:1.5), 30 mins no heat and 6.117 + 3%
6. Rinse, shampoo and condition with Couture Care Hydrolock and blowdry





Existing: Natural Depth 8  
Target: Snow Crystal Blonde

1. Section back to back micro foils using Alpine Blue Powder lightener + 6% LH Developer
2. Process without heat up to 50 mins or to a 10 level is reached
3. Rinse and shampoo with Couture Care Hydrolock and towel dry
4. Globally tone with Lilac + 10.21 + 3% LH Developer (1:1.5)
5. Process visually or up to 10 mins
6. Blowdry and style





Existing: Natural Depth 8  
Target: Silver Steele

1. Full head application of micro foils using Alpine Blue Powder Lightener + 6% LH Developer (1:2)
2. Process up to 50 mins without heat
3. Rinse and shampoo with Couture Care Hydrolock
4. Towel dry hair, apply toner Frost + 10.21 + 3% LH Developer (1:1.5). visually process up to 10 mins
5. Rinse and condition with Couture Care Hydrolock and blowdry





“Elegance is the only beauty that never fades”

audrey hepburn



Existing: Natural Depth 8  
Target: Flaxen Blonde

1. Full head sparse micro foils. Apply Alpine Blue + 3% LH Developer (1:2)
2. Process up to 50 mins without heat or to an even level 10 level
3. Rinse and shampoo with Couture Care Hydrolock
4. Root area; mix and apply target toner 9.2 + Conditioner + 3%
5. Toner mid and ends with Lilac + Champagne + 3% LH Developer (1:1.5). Visually process
6. Rinse and condition with Couture Care Hydrolock and blowdry



Leyton House Professional  
UNITED KINGDOM UNITED STATES AUSTRALIA  
E: [sales@leytonhouseprofessional.com](mailto:sales@leytonhouseprofessional.com)  
[www.leytonhouseprofessional.com](http://www.leytonhouseprofessional.com)  
Global Cosmetics Group®

